

# Taps

Stone & Wood Pacific Ale	\$12	Six String Lemonade	\$12.5
Byron Bay Lager	\$11	James Squire Cider	\$12.5
Drifters TPA	\$11.5	Young Henrys Newtowner	\$11.5
Tooheys New	\$10.5	Heineken	\$13
Hahns Super Dry	\$10.5	Hawkesbury Watermelon Seltzer	\$12.5
Hahns Super Dry 3.5%	\$9.5	James Squire Ginger Beer	\$12.5
Kosciuszko Pale Ale	\$12.5	Mountain Culture Status Quo Pale Ale	\$12.5

# Cap-Tins

White Claw Mango Seltzer	\$13	Gordan's Pink Gin & Soda	\$12
White Claw Lime Seltzer	\$13	Young Henry's Cloudy Cider	\$10
Corona	\$10.5	Grifter Omen Stout	\$12.5
Jack Daniels & Cola	\$12	Grifter Serpent Kiss	\$12.5
Smirnoff Double Black	\$12	Watermelon Pilsner	

# Non-Alcoholic

## SOFT DRINKS

Coke	\$5
Coke No Sugar	\$5
Sprite	\$5
Lift	\$5
Ginger Ale	\$5
Bundaberg Ginger Beer	\$5
Tonic	\$5

## WINES

150ml / 250ml / btl.

Mcguigan Zero Sparkling	\$9 / - / \$30
Mcguigan Zero Sauvignon Blanc	\$8.5 / \$13 / \$34
Mcguigan Zero Shiraz	\$8.5 / \$13 / \$34



## ENERGY DRINKS

Red Bull	\$6
Red Bull Sugar Free	\$6
Red Bull Tropical	\$6

## BEER

Heaps Normal XPA	\$8
Heineken 0%	\$8

# Wines

## WHITE

<b>Tempus Two Sauvignon Blanc</b> Hunter Valley, NSW	150ml / 250ml / btl. <b>\$9.5 / \$16 / \$40</b>
<b>Johnny Blanco Sauvignon Blanc</b> Adelaide Hills, SA	<b>\$12 / \$18 / \$52</b>
<b>Acceptable Pinot Gris</b> Murray Darling, NSW	<b>\$11.5 / \$17.5 / \$50</b>
<b>From Sunday Chardonnay</b> Orange, Sunday	<b>\$12 / \$19.5 / \$56</b>
<b>I'l Cattivo Finao</b> Longhorn Creek, SA	<b>\$13 / \$20.5 / \$60</b>
<b>Monochrome Rainbow Moscato</b> Murray Darling, Vic	<b>\$11 / \$17 / \$46</b>

## ROSE

<b>TLD Rose</b> Murray Darling, NSW	150ml / 250ml / btl. <b>\$11 / \$18 / \$50</b>
--	---

## SPARKLING

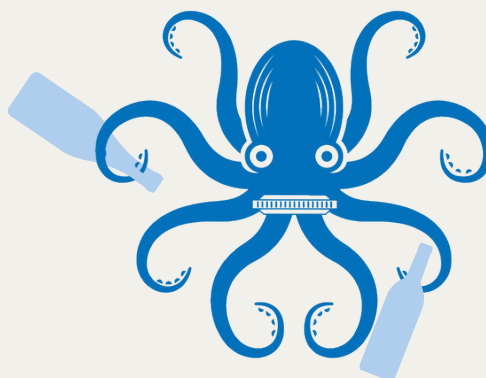
<b>Acceptable Prosecco</b> Murray Darling, NSA	150ml / btl. <b>\$12 / \$55</b>
<b>Tempus Two Prosecco</b> Hunter Valley, NSW	<b>\$10 / \$45</b>
<b>Chandon Brut</b> Yarra Valley, VIC	<b>\$14 / \$65</b>

## RED

<b>Tempus Two Shiraz</b> Hunter Valley, NSW	150ml / 250ml / btl. <b>\$10 / \$16.5 / \$42</b>
<b>I'l Cattivo Sangiovese</b> Adelaide Hills, SA	<b>\$13.5 / \$22 / \$63</b>
<b>Acceptable Pinot Noir</b> Orange, NSW	<b>\$12 / \$19 / \$54</b>
<b>Big Easy Radio Malbec</b> McLarenavale, SA	<b>\$13 / \$21 / \$65</b>
<b>Geologie Cabernet Sauvignon</b> Clare Valley, SA	<b>\$12.5 / \$20 / \$56</b>

## CHAMPAGNE

<b>Veuve Clicquot Yellow</b> Reims, Fr	btl. <b>\$190</b>
---	----------------------



15% surcharge on public holidays / 5% surcharge on Sundays.  
Please note all transactions paid via card will incur a bank surcharge